

# "THE TOWPATH" – JANUARY, FEBRUARY, MARCH - 1991

THIS NEWSLETTER IS PUBLISHED QUARTERLY BY  
THE NEW BREMEN HISTORIC ASSOCIATION  
P.O. Box 73 – New Bremen, Ohio 45869  
Marjorie Lietz, Editor

SUPPORT YOUR MUSEUM: **Membership dues are \$3.00 per year.** Life Membership is \$50.00  
Donations, either material or monetary, are always welcome!  
*"The Towpath"* brings you some history of New Bremen - your article is welcome.

## SLATE OF OFFICERS & TRUSTEES

Carol Stauffer .....	President
Stanley Hertenstein.....	Vice Pres.
Craig Hoffman.....	Secretary
Betty Schroer .....	Treasurer
Willis Dicke.....	Trustee
Dorothy Hertenstein .....	Trustee
Steve Patterson.....	Trustee
Rob Stauffer / Norman Holcomb.	Trustee
Donna Watkins.....	Trustee
Irene Wellemeyer ....	Corresponding Secy.
Sue Maxson .....	Historian
Dottie Boesel.....	Co-Curator
Vernita Scheer .....	Co-Curator
Susie Hirschfeld .....	Membership
Mary Wint.....	Genealogy
Marjorie Lietz.....	"Towpath" Editor



**THE OLD NEW BREMEN DEPOT  
TAKEN FROM ROUTE 274 LOOKING SOUTH**

<<<<>>>>

A BIG THANK YOU TO ALL WHO HELPED WITH THE CHRISTMAS TREE FESTIVAL. THE WEATHER WAS GREAT AND THERE WAS A STEADY STREAM OF VISITORS AT THE MUSEUM ON DEC. 2<sup>ND</sup> FROM 11:30 AM TO 8:00 PM. THERE WERE MANY BEAUTIFUL DISPLAYS, INCLUDING FOUR COLLECTIONS OF OLD AND NEW "KRIS KRINGLES". EVERYONE ENJOYED THE FANCY HOMEMADE COOKIES AND THE HOT CIDER.

Door prizes went to Katherine Knost, poinsettia; Bea Young, Precious Moment; Julius Nerderman, Precious Moment; Dorothy Hertenstein, Precious Moment; Cindy Newman, candle holder; Alice Wissman, clutch; Barbara Moeller, clutch; Carolyn Pape, apron; Marie Anthony, stuffed duck; Kelly Knapke, stuffed dog.

THE GIFTS WERE DONATED BY Cornerstone Shop, Gilberg's Furniture, Howell's IGA, Schwieterman's Drug Store, Pantry Pride, Willis and Helen Dicke and Paul and Marjorie Lietz. THANK YOU!

THE DAYS SHORTEN, WINTER GROWS NEAR, THE TEMPERATURE DROPS, AND SNOW FLAKES APPEAR. QUICKLY BUT SLYLY, THE SNOWFLAKES CREEP, COVERING THE GROUND AS THE EARTH GOES TO SLEEP. THEY REST THERE ALL WINTER, NOT MAKING A SOUND, WAITING FOR SUNSHINE TO AWAKEN THE GROUND.  
(A. Arnold – Ideals)



REMEMBER Valentine's Day February 14, 1991.

EASTER COMES EARLY IN 1991 - March 31st ...

## ANNUAL DINNER MEETING

The Annual Dinner Meeting will be held in March 1991. Plans are being made for this happy event, but at the time of this publication are not yet complete. Watch for the article in your local newspaper – also large cardboard notices in the local stores.

## NEW BREMEN HISTORIC ASSOCIATION ANNUAL FINANCIAL REPORT - 1990

\$187.73	Balance January 1, 1990		
5350.00	<b>RECEIPTS:</b>		
1041.32	Dues and Donations	\$3201.54	<b>DISBURSEMENTS:</b>
	Special Events (Annual Dinner Meeting, Quilt Show, Christmas Open House)	336.49	Property Maintenance (Includes Painting)
1005.00	Grants	480.00	Utilities
215.71	Interest	840.11	Insurance
<u>\$7612.03</u>	TOTAL RECEIPTS	898.09	Special Events Expenses
7799.76	<b>TOTAL</b>	220.00	Newsletter Expenses (Printing & Postage)
<u>-5976.23</u>	<b>-DISBURSEMENTS</b>	<b>\$5976.23</b>	Miscellaneous (Office Supplies, Stamps, Curators Supplies, etc.)
\$1823.53	Balance December 31, 1990 (Checking Acct.)		<b>TOTAL DISBURSEMENTS</b>
\$1500.00	Reserve (American Budget)		<i>[Betty Schroer, Treasurer]</i>

THANK YOU! THROUGH THE COURTESY OF THE LEAR FIRE EQUIPMENT CO., OUR FIRE EXTINGUISHERS AT THE MUSEUM HAVE BEEN SERVICED FREE OF CHARGE. THANK YOU TO THE HOFFMAN PAINT CO. FOR THEIR GENEROUS DISCOUNT ON OUR PAINT BILL AT THE MUSEUM. ALL HELP IS GREATLY APPRECIATED. THE MUSEUM IS YOURS TO ENJOY - COME AND VISIT!

### DOBBIN, SLEIGH AND BILL VARNO - 1930

"Faithful Dobbin and the old-fashioned sleigh again were seen in New Bremen this week. Rain and snow, accompanied by freezing temperatures, were made to order for sleighing, so much so in fact that Bill Varno lost no time in dusting off his sleigh and bringing it out from his hiding place. Bill drove about town all afternoon, sometimes alone and then again accompanied by some friend who got a real thrill out of gliding smoothly over the icy surface of the streets.

All that was missing to complete the picture of a generation ago was the merry jingle of bells and shouts of happy youngsters trudging about the streets with their sleds. Sleigh bells no longer are being bought here, while the children of those days have been followed by a new generation which finds greater delight and more comfort in thumbing automobile rides."  
*(The New Bremen Sun)*

EDITOR'S NOTE: Mr. & Mrs. Bill Varno and their children lived on North Walnut Street. Mr. Varno was known by all because he collected the town's glass and cans that now, in 1991, we are recycling.



ABOUT THIS PICTURE: This picture comes from the collection of Arnold C. Gieseke (deceased) and the year is not known. It was a long time ago when the "DINKY" pulled up on the spur for loading and unloading machinery on the west side of STAMCO.

EDITOR'S NOTE: The Streine Tool and Manufacturing Company is now known as STAMCO, located in the southwest corner of New Bremen. STAMCO has undergone extensive remodeling and "building on" in the year of 1990.

### OCTOBER 1921 - BIG MACHINE

"One of the giant sheet metal presses, manufactured at the shops of the Streine Tool and Manufacturing Company, was Tuesday transferred from its place of manufacture to the shops of the Auglaize Hoist & Body Company, where it is being installed for active operation in the production of needed steel parts for the famous ALSTEEL bodies and the PEERLESS hoists that are being manufactured on a large scale by the latter company. Of course, every machine from the Streine shops have given satisfaction thus far."  
*(The New Bremen Sun)*



This picture is an "excerpt" taken from the large school picture of 1913.  
The girl with the 'x' marked on her sleeve is Malinda (Gieseke) Horn.

### A CHRISTMAS MEMORY by Malinda (Gieseke) Horn

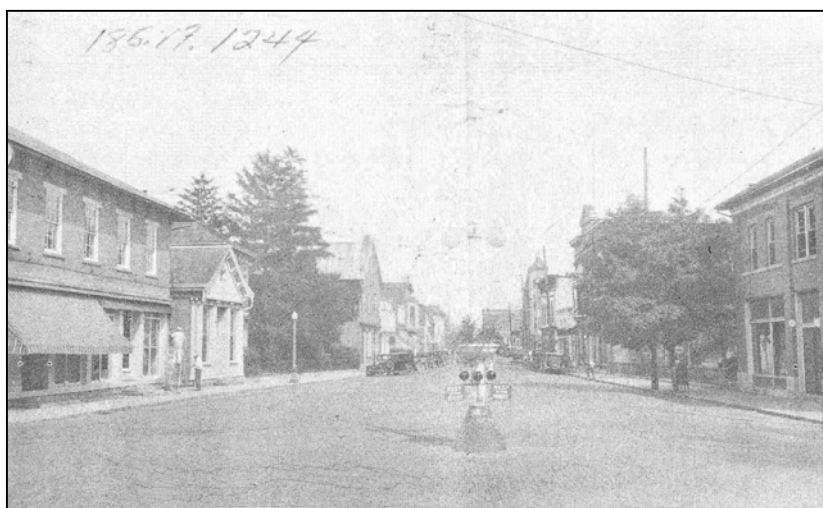
I am turning back the years to an episode I remember as a child. I was about 10 or 11 years old. The merchants of New Bremen usually had a special program on the Saturday afternoon before Christmas. I don't remember much about the speeches, etc., but recall vividly that a puppy and a lovely doll would be given to the boy or girl who could correctly name them.

All kinds of names were called out, but when Fred Behm said "Happy", he won the puppy!

The correct name for the doll had everyone guessing until finally a little girl said "Mary" and she received the doll.

These gatherings took place around the flagpole at the intersection of Main and Monroe Streets.

I can't remember who won the doll. CAN YOU? (by M.G.H.)



### PICTURED ON YOUR LEFT:

Monroe Street looking east. In the foreground one can see the flagpole. It was taken down in 1937. This postcard picture is dated September 1931.

## "THE CRIMSON AND GOLD" - THE SCHOOL NEWSPAPER - OCTOBER 1930

EDITOR-IN-CHIEF: Mary Archer  
ASSOCIATE EDITOR: Marie Kuest  
ASSISTANT HUMOR EDITOR: Louise Haines  
BOYS' SPORTS EDITOR: Frederick Luedeke  
GIRLS' SPORTS EDITOR: Helen Knipple  
FRESHMAN CLASS REPORTER: Paul Eschmeyer

### NOVEMBER 28, 1930: FRESHMAN CLASS TO HAVE 10-PIECE ORCHESTRA



DURING THE COURSE OF THE LAST FEW WEEKS, A FRESHMAN CLASS ORCHESTRA OF 10 PIECES HAS BEEN ORGANIZED BY THE NUMEROUS MUSICALLY-INCLINED MEMBERS.

#### THE BAND CONSISTS OF:

ELOISE BLANKE, DRUMS  
BETTY BURK, ALTO  
BERNADINE BROCKMAN, SAXOPHONE  
DOROTHY SUNDERMAN, FIRST VIOLIN  
MILFORD GREBER, SECOND VIOLIN  
ARLIN GREBER, PIANO  
NEALE BEHM, BANJO  
REUBEN THIESING, TRUMPET  
HUBERT HEINFELD, TROMBONE  
WILLIAM KUCK, UKELELE

THE ORCHESTRA IS DIRECTED BY THE CLASS SPONSOR, MISS PAULINE HAUSS. THE FIRST PRACTICES BROUGHT FORTH UNEXPECTED RESULTS AND WITHIN THE NEAR FUTURE, IT SHOULD ROUND UP IN FINE FORM. *-NEW BREMEN SUN*

### CHICAGO PUBLISHERS ACCEPT COMPOSITION BY MRS. GRACE SNYDER

*(NEW BREMEN SUN - MARCH 9, 1933)*

"SHEDDING TEARS", A BEAUTIFUL WALTZ SONG COMPOSED BY MRS. GRACE SNYDER, NEW BREMEN, HAS BEEN ACCEPTED AND PUBLISHED BY THE DIXON-LANE MUSIC CORPORATION, CHICAGO, ILLINOIS. ALWAYS INTERESTED IN MUSIC, MRS. SNYDER STARTED COMPOSING A FEW YEARS AGO AND HAS GAINED WIDE RECOGNITION BECAUSE OF THE SUCCESS ACCORDED SEVERAL OF HER COMPOSITIONS.

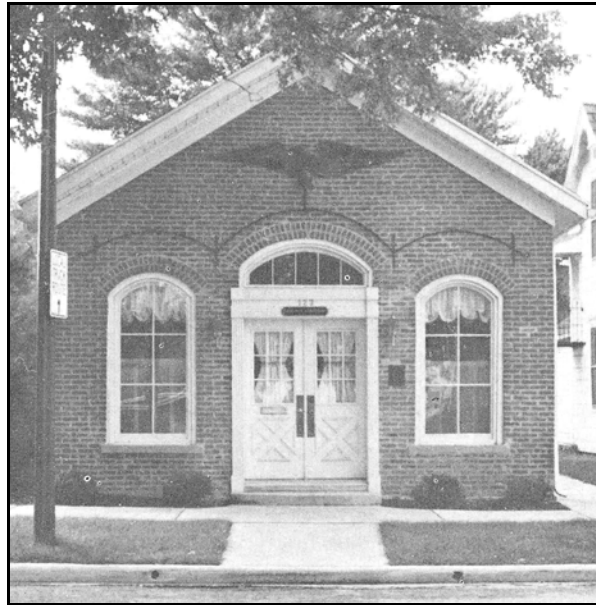
IN 1930, SHE COMPOSED "HERE'S TO THE PRESIDENT" AND DEDICATED IT WITH PERMISSION TO PRESIDENT HOOVER. MR. HOOVER HAS A COPY OF THIS COMPOSITION IN HIS POSSESSION.

"SHEDDING TEARS" WAS PLAYED REGULARLY THIS WINTER BY MICHAEL HAUER'S AND JACK WALKUP'S ORCHESTRAS AT CINCINNATI, DAYTON AND MINSTER. EARL SIKES AND HIS ORCHESTRA ALSO USED IT LAST SUMMER AT GORDON STATE PARK, ST. MARYS, OHIO. IT LIKewise IS PLAYED BY THE NEW BREMEN HIGH SCHOOL BAND AND WAS HEARD IN ITS PROGRAM BROADCAST SEVERAL MONTHS AGO OVER WOWO, FORT WAYNE.

ANYONE DESIRING A COPY OF THIS COMPOSITION MAY OBTAIN IT AT THE MUSIC COUNTER IN THE ARCADE DEPARTMENT STORE.

#### EDITOR'S NOTE:

Many of you will remember Mrs. Grace Snyder's husband "Bob". He was the Railroad Agent at the depot. Where was the depot? It was located on the south side of West Monroe Street on the east side of the tracks.



### GERMAN TOWNSHIP HOUSE - 1990

This sturdy brick building is located on North Main Street, a neighbor to the 1st National Bank and Post Office and across the street from the NBHA Museum. Quite a few of us remember this building as Walter Fischbach's Bicycle Shop. Then, one day the front was boarded up and the little building stood vacant for a long time.

Now in 1990, it stands proudly in its new attire and we are glad it is a part of our town, New Bremen.

THE HISTORY OF THIS BUILDING goes back many years. The following article was written by Fernando W. Bruns (now deceased) of New Bremen and published in "*The New Bremen Sun*" some years ago:

"Adjoining the Lehmkuhl Hotel building was my deceased dad's marble-cutting shop in the seventies and eighties (1870s-1880s). Pneumatic marble-cutting tools were unknown in those years and when Dad Bruns contracted for a monument or grave marker, he did it with a stile chisel and wooden mallet, and needless to state, he did it in a perfect manner, which beg-your-pardon-statement can be substantiated by inspecting his work. The initials W.B. were on all the monuments and markers which he sold.

Dad Bruns became a marble and gravestone cutter in his boyhood days when William Langhorst accompanied him to Cincinnati and paid a year and a half tuition for him in a school of marble cutting."

EDITOR'S NOTE: Fernando W. Bruns wrote many articles of old time New Bremen for the local newspaper, "*The New Bremen Sun*" and his pen name was SNURB, which is Bruns spelled backward! You will know his son and daughter-in-law as Elton ("Pitt") and Daisy, who now make their home at the Dorothy Love Retirement Center in Sidney, Ohio. Elton and Daisy have one son, William, an attorney in Muncie, Indiana. His wife is Nita and their sons are Ed and Dan. The name Bruns is a long-time New Bremen name.

### DO YOU REMEMBER? MIND JOGGERS

[from "*The New Bremen Sun*"]

March 24, 1894: ELECTRIC LIGHT is used in the business houses of Messrs. Edward Purpus, Henry Laut, Christ Langhorst and Fred Ende. The lights are connected to the main line, but it is said that a commercial line will soon be put up and an extra engine and dynamo will be placed in the power house.

July 1898: MAYBE HE WAS YOUR RELATIVE! Herman Hirschfeld, the climber, hugged the flagpole on top of the Opera House like a bear hugged a tree! He hugged it long enough so that he could paint it. For work in the climbing line, the people look to Herman.

August 8, 1919: REAL ESTATE, especially farmland surrounding New Bremen is holding its own and continuing to rise in price. In the northwest area, 40 acres sold for \$225 an acre!

THE NEW BREMEN SUN SAYS: In 1858, there were 700 persons in our little village of New Bremen.

NEW BREMENITES WELCOMED THE ARRIVAL OF THE CANAL BOATS: The MAZEPPA brought merchandise and so did the AUGLAIZE. The BELLE brought merchandise and lumber. When the MAZEPPA departed from New Bremen, her cargo was 2000 bushels of wheat. The IOWA's cargo was wheat and the AUGLAIZE and BELLE each left with 28,000 bushels of barley.

## SCHOOL NEWS – 1920

Elmer W. Jordan, Supt.



### SENIOR CLASS PLAY of 1920 – “A STRENUOUS LIFE”

CAST: Almond Shafer, Orrin Blanke, Selma Speckman, Omer Fritz, Marion Boesel, Clara Schmedt, Walter Kuck, Esther Brandt, Meta Meckstroth (kneeling), Wilbur Garmhausen, Wallace Grothaus, Arlie Dicke, Harriet Kuenzel, Wayne Jordan, Edna Langhorst, Leon Stroofer. (NOTE: Almond Shafer and Orrin Blanke were Juniors.)

It was in 1920 when the New Bremen School Board leased the Boesel Opera House to use as an assembly room for the students. Members of the Board at that time were A.C. Settlage, Pres.; A.F. Isern, Clerk; William Tostrick, Charles Garmhausen and Dr. F.F. Fledderjohann.

For the next 10 years, the Opera House was used for class plays, literary meetings and commencement exercises. The Boesel Opera House became very dear to the hearts of many students as they practiced many long hours there and then performed on the stage.

This picture was taken on the stage of the Boesel Opera House. The picture is on loan from Wilbur J. Garmhausen.



**MORE MEMORY JOGGERS:** A long time ago, Grandpa Fuelling (as he was known) conducted a clock repair shop, a clinic and a barbershop on the site of F.H. Dammeyer's residence on North Main Street.

IN 1923, with every dollar purchase at Erhardt's Dry Goods Store, you received a free ticket to THE CROWN THEATRE!